

Hiab Certified Refurbished Moffetts





The Hiab Certified Refurbishment Process



Initial Check-In & Inventory



Partial Disassembly & Deep Cleaning



Test & Repair



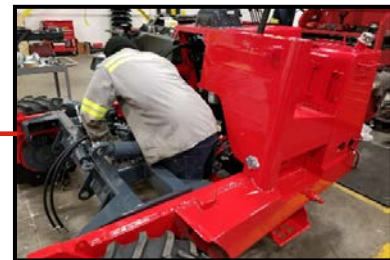
Full Disassembly



Wash, Sand, & Prep for Paint



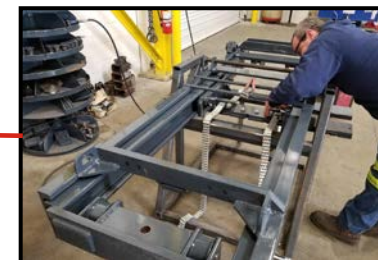
Pre-Delivery Inspection (PDI)



Final Assembly



Panel Repair and Pre-Assembly



Mast Overhaul

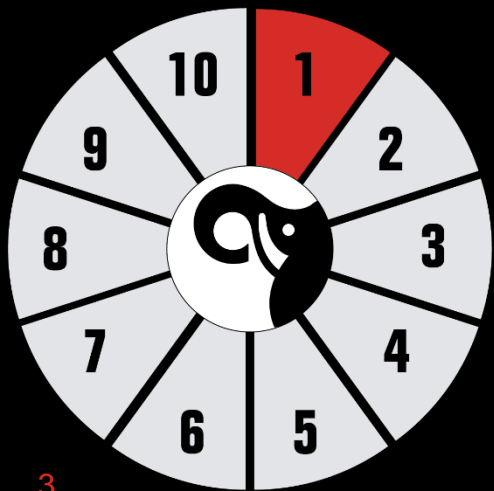


Paint

Initial Check-In and Inventory



- Each piece of used equipment is checked in and inventoried.
- Arriving MOFFETTs are photographed and inspected both visually and mechanically, then an initial condition report is created.
- Only the best machines are selected to enter our refurbishment process



Partial Disassembly and Deep Cleaning



- Partially disassembling the MOFFETT allows a more thorough inspection by removing items that might hinder the inspection and repair process.
- Deep cleaning ensures that there are no issues that may be hidden by grease or dirt.
- MOFFETT's that are unrepairable are removed from production and sold as wholesale, ensuring a top quality OEM Refurbished MOFFETT



Test and Repair



- Our Team of experienced Hiab USA technicians complete our initial inspections
- Worn or damaged parts are replaced with genuine MOFFETT parts
- Each MOFFETT is inspected for items which do not conform to the Hiab OEM standards
- All safety items are checked and upgraded in accordance with the latest service bulletins
- Any oil leaks investigated and repaired
- Over 100 items are routinely inspected and repaired or replaced, including:
 - Worn or damaged hoses
 - Leaking hydraulic cylinders/damaged rods
 - Warning lights
 - Safety door and seat belt
 - Differential lock
 - Steering bearings
 - Hydraulic pumps



Full Disassembly



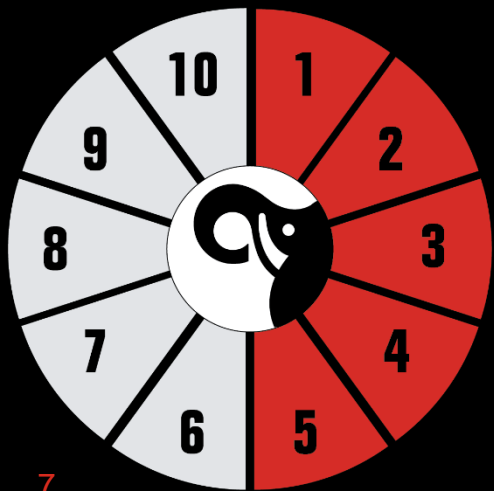
- Items such as steel fuel tanks, seats, hoods, back doors, and electrical harness are inspected and replaced.
- Steering linkages, wheels, and roll cages are prepared for refurbishment, or replaced if damaged.
- Damage to the chassis is repaired by a Hiab fabrication specialist using genuine Moffett parts



Wash, Sand, and Preparation for Painting



- The MOFFETT chassis is steam cleaned and completely sanded in preparation for paint.
- Our painting preparation team meticulously wraps hoses, wheel motors, engine compartments and electrical components to provide our customers with the best paint job on the refurbished market.



Paint



- Our top of the line paint booth can paint multiple units at one time
- In addition to the chassis, we prep and paint all usable:
 - Forks
 - Safety roll cages
 - Wheel motor covers
 - Seat plates
 - Load backrests
 - Mast sections
 - Hydraulic cylinders
 - Carriage assemblies



Mast Overhaul



- All masts are completely stripped down, steam cleaned, and all needed stubs are replaced in preparation for paint work.
- After painting, the masts are completely assembled for installation.



Panel Pre-Assembly



- Body panels are pre-assembled for installation.
- Dash panel electrical wiring is checked and replaced if worn



Assembly Process



- Only genuine MOFFETT parts are used in final assembly process.
- Rims are reconditioned and powder-coated.
- All fluids (engine oil, hydraulic oil, antifreeze, and diesel fuel) and filters are new.
- All new safety decals are installed.
- New parts used for wear items such as tires, bearings, slide pads, mast chains, plexiglass roll cage guard, safety door, safety chains, dash panels, and moving hoses.

Pre-Delivery Inspection (PDI)



- The 62 point MOFFETT Pre-Delivery Inspection and Final Operational Checks are performed prior to delivery.
- The same process that applies to our new machines applies to our OEM refurbished machines

Completed MOFFETT



- Once complete, the units are shipped from St. Louis, Missouri to the customer's desired location.
- Each Certified Refurbished MOFFETT comes with a warranty.
 - M55 Models: 6 month, 200 hour parts and labor warranty
 - M5500 Models: 2 month, 75 hour parts and labor warranty

Why choose Hiab?

Hiab Certified Refurbished Moffett

- Genuine Factory Moffett Parts
- New Safety Items
- All wear items are replaced
- New tires
- Full parts & labor warranty
- Backed by nationwide service network
- Best looking and operating refurb on the market
- **OEM Certified!**

The Other “Refurbished” Moffetts

- Aftermarket and handmade parts
- Safety items can be “repaired”
- Wear items may be at the end of life
- Used tires
- As-Is, Where is or limited warranty
- Limited or no service network

[Click here to check out more of our refurbished equipment offerings!](#)

BUILT TO PERFORM



HIAB